



WINTER WARDROBE

Winter is here! You might have to put on a hat—or a scarf and mittens—when the weather gets cold. Color in the winter clothes and the person who’s all bundled up in the picture below!





WINTER IS HERE!

How do you know it's winter? Is it starting to get really cold outside? Do you wear sweaters and drink hot cocoa? Look at the pictures below, and circle the ones that make you think of winter!



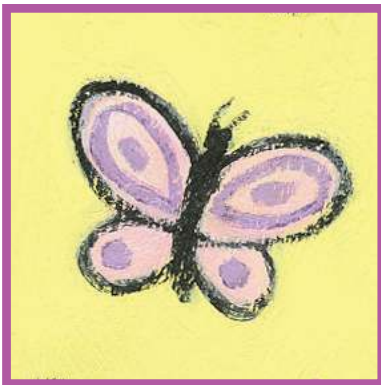
Snowmen



Flowers



Warm clothes



Butterflies



Snow